

eoFinder Trace™

The next generation of Call Trace

Introduction

From the early days of network monitoring, the power of the MasterClaw® Call Trace application has been a standard that other systems have envied. Anritsu does not sit on its laurels, and the time has come to take Call Trace to the next generation.

Anritsu has studied how MasterClaw® is used, how users manipulate the information available and how MasterClaw® fits into the wider troubleshooting process. The result of this work is a suite of new features in the GUI, complete with a more modern look and feel. eoFinder Trace™ is the new name for Call Trace, signifying the relationship with eoFinder Browse™, the new xDR based troubleshooting tool.

Unified troubleshooting platform

The eoFinder Trace™ application is one of many related applications supported by the eoFinder™ troubleshooting platform. All eoFinder™ applications share same unified user interface helping users to feel comfortable no matter whether they are browsing data records, launching traces, or scheduling raw data captures.

Work-flow support

MasterClaw® is designed to fit the way you work. Troubleshooting is not an isolated task; something triggers an investigation. It could be a customer complaint, an alarm at the network management centre or numerous other starting points. It also is not an end-point of the process. Once the root cause of a problem is identified, someone has to make a change in the network to resolve the issue. Moving between these functions, and sharing information between departments is all part of the new eoFinder™ structure.

New features

The following will explain some of the new features added to the eoFinder Trace™ application.



Key benefits

- Improved productivity through shared interface for multiple applications
- Faster problem resolution through clearer information display
- Improve inter-department communication with integrated applications for customer care and network operations

Key features

- Easy search of information
- Better overview of multiple traces with tabbed result panel
- Combined result and setup dialogue boxes
- Enhanced search features

Clipboard function enables comparison of non correlated results

eoFinder Trace™

The next generation of Call Trace

Work-flow support

eoFinder Trace™ is part of an integrated work-flow supported by MasterClaw®.

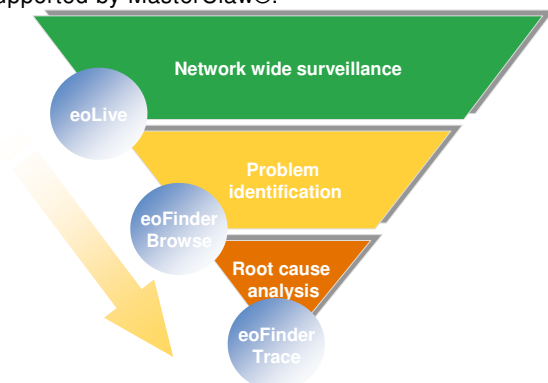


Figure 1: Troubleshooting work-flow

User interface

The user interface is an evolution of the previous “offline Call Trace client” with similar look and feel of the application. This is presented with new and modern GUI features like the tabbed result panel and advanced searching functions.

Tabbed results

A new feature of eoFinder Trace™ is the tabbed results window. In tabbed views, eoFinder Trace™ enables simple switching between set-up and results for multiple calls. eoFinder Trace™ groups together all information for a trace under a single tab, highly increasing the usability of the application.

Locked selections

Another feature of the tabs is the locking of selections. This ensures that the highlighted result is kept when users shift through different tabs. Furthermore, it synchronizes the view between the different display elements in the tab.

Search feature

eoFinder Trace™ comes with a comprehensive search engine that will make text searches across the total result set. This makes it very easy to quickly find specific causes codes etc.

Clip board function

eoFinder Trace™ introduces the clip board function which enables users to combine multiple call trace results into a single ad-hock correlated call trace view. Messages from both calls are shown in time order in the message sequence diagram and in protocol analysis. This allows freeform integration of individual results into one view without the needed for a predefined complex scenario.

Simplified layout configuration

A new results configuration GUI features a simplified view for selecting and ordering information displayed in the results window.

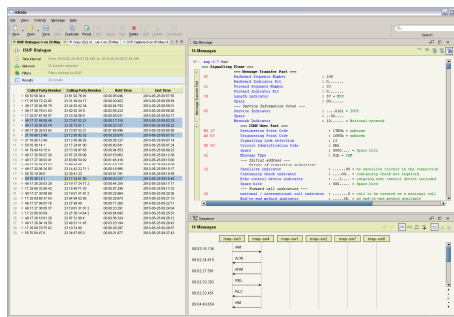


Figure 2: Tabbed results

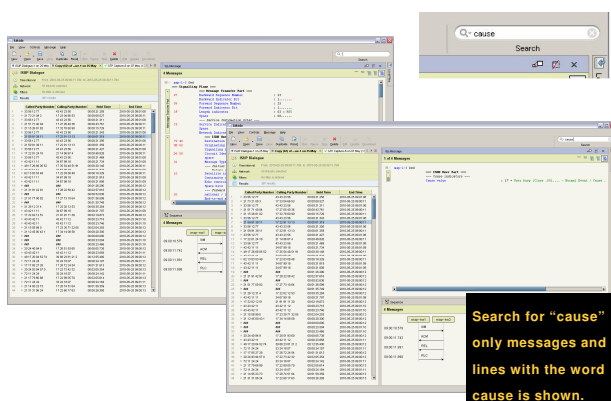


Figure 3: Search function

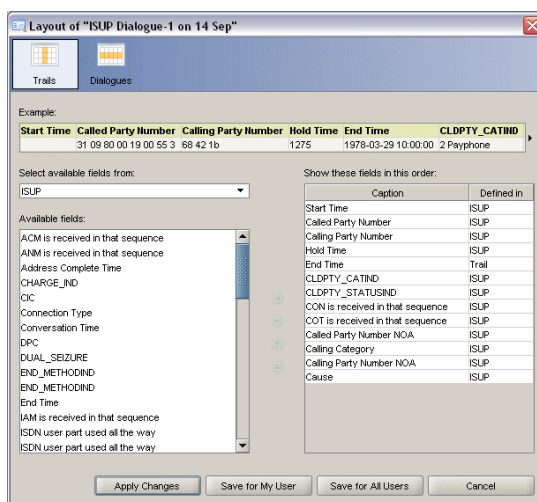


Figure 4: Results layout dialogue

Anritsu

ISO 9001:2000 certified. ©2007 Anritsu. All Rights Reserved.

Specifications subject to change without notice. E&EO.

0211

Anritsu A/S
 Kay Fiskers Plads 9
 2300 Copenhagen S
 Denmark
 Tel: +45 72 11 22 00
 Fax: +45 72 11 22 10
 E-mail: info@anritsu.com
 Web: www.anritsu.com

Japan +81-46-223-1111
 USA +1-972-644-1777